

Discovering & Unlocking Potential with TopFruit 2021

08:30-09:00: Welcome to Discovering & Unlocking Potential with TopFruit 2021

09:00-10:00: Pome Fruit varieties

10:00-11:00: Stone Fruit varieties

11:00-11:30: Break

11:30-12:30: Table Grape varieties

12:30-13:30: Berry varieties

13:30-14:30: Kiwifruit varieties

14:30-14:40: Goodbye and thank you

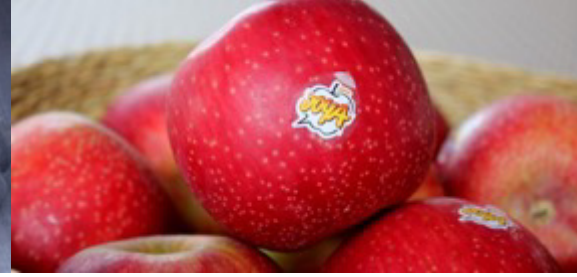


View new TopFruit Corporate video [here](#)



TopFruit Marketing

View TopFruit Marketing video [here](#)



TopFruit Pome Fruit

International Leaders in Cultivar Management

- Commercially available varieties – Corné Grundlingh
- Future potential commercial varieties – Peter Alderman
- Commercial Rootstocks – Tilis Moggee

- Bingo Gala
- DPP1 / Cape Fire™
- Golden Joy
- INORED / Story®
- Lady in Red / Pink Lady®
- RDS / JOYA®

Variety	Trademark	Colour	Harvest	Outstanding Characteristics
Bingo Gala	None	Bi-Colour	Gala harvest 2nd to 3rd week of Feb Full bloom is early to mid-October	<ul style="list-style-type: none"> • Locally discovered mutation • Cherry red blush stable gala mutation. • Fragrant and sweet taste with a crisp texture • Fruit size is typically that of Gala • Colours extremely well. Bingo Gala is advertised as a potential top seller in Asia, because of its high colour. It offers opportunities for South African producers to be more competitive in Asian markets with a higher coloured gala. • Internal quality and maturity variation can easily be managed with a two-pick harvest strategy. • Bingo Gala is a production and labour friendly variety. • Bingo Gala offers an extremely high bin pack-out with an average exportable class 1 pack-out of > 85% with more than 80% red colour surface area • The value of Bingo Gala lies in the extremely high pack out, directly benefiting the farm • Recommended cross pollinators such as Golden Delicious, Fuji, Granny Smith, Hillieri, African Red and Cripps Pink • TopFruit manages this variety internationally



View Bingo Gala video [here](#)

Variety	Trademark	Colour	Harvest Window	Outstanding Characteristics
Dpp1	Cape Fire™	Bi-Colour	Harvest very late in the season ; early April (later than Forelle)	<ul style="list-style-type: none"> • Locally discovered mutation • Red blush, high-colour, attractive mutation of the Forelle pear varietal • The appealing colour of this variety puts it in very high demand in the market • Eating characteristics are sweet and crisp • Good producing variety • Excellent long-term storage capabilities • Plantings done in Australia and good interest from Belgium • TopFruit manages this variety internationally



DPP1 / Cape Fire™



View Cape Fire™ video [here](#)

Variety	Trademark	Colour	Harvest	Outstanding Characteristics
Golden Joy	None	Yellow	Early Golden (Few days after Panorama Golden) Full Bloom is early to mid-September.	<ul style="list-style-type: none"> • Locally discovered mutation • Stable, high bearing, early Golden Delicious mutation with clean cosmetic appearance because of its limited stem-end russet • Taste is fragrant and sweet with a crisp texture • Fruit size is typically that of Golden Delicious and the fruit stores very well • The pack outs are exceptional at 82% EU Class 1 standard • Oldest commercial block yields between 80 to 95 Tons per hectare • If you need Golden Delicious in your varietal mix, then this is the golden to plant. It is an early variety which is easy to farm, and it helps to flatten the picking curve created by Golden Delicious and Royal Gala • Recommended cross pollinator is Louterwater Granny



Golden Joy

View Golden Joy video [here](#)

NEW PLANTINGS 2021

 Cosmic Crisp® 19,30%	 Joya® 6,63%
 Giga® 16,55%	 Royal Gala 5,82%
 Pink Lady® 11,56%	 Kanzi® 3,69%
 Granny Smith 8,54%	 Fuji 3,35%
 RedPop® 8,45%	 Crimson Snow® 3,20%
 Envy™ 7,23%	



Golden Joy

Variety	Trademark	Colour	Harvest	Outstanding Characteristics
Inored	Story®***	Bi-Colour	1 st to 2 nd week of April (Favourable window after Golden and Top Red harvest, but before the Pink Lady harvest)	<ul style="list-style-type: none"> • INRAE Breeding Programme (Pinova x X6398) • Very attractive, bright intense red with a subtle & sweet taste • Very dense and very sweet with very low acidity • Tolerant to the common strains of scab • Low to average susceptibility to mildew • Fruit hang on very long stems, making them easier to harvest with limited picking injuries • Less fruit drop than other red varieties after strong winds • Little incidence of sunburn • Average Gala size or a bit larger • Exceptional storage ability (8 months in RA), does not go mealy in storage • Requires step-down cooling



View Inored/Story® video [here](#)

Lady in Red / Pink Lady®

Variety	Trademark	Colour	Harvest	Outstanding Characteristics
Lady in Red	Pink Lady®	Pink	Last 2 weeks April	<ul style="list-style-type: none"> • A New Zealand discovered mutation of Cripps Pink showing the same bright blushed pink red colour, but covering over 70% of the fruit • No reversion with Lady in Red yet. • Lady in Red colours earlier and the advantage of that is seen in a poor colour year. • At the time of harvest the colour of Lady in Red is so much better, compared to Cripps Pink. • In the Ceres area a Lady in Red class 1 pack out of 80.9 % compared to other CPM's class 1 pack out of 63.5% has been reported. The class 1 pack out of Cripps Pink is only 46.5%.



View Lady in Red/ Pink Lady® video [here](#)

Variety	Trademark	Colour	Harvest	Outstanding Characteristics
RDS	JOYA®	Bi-Colour	Late season harvest (Late April - Middle May)	<ul style="list-style-type: none"> • Mutation of Cripps Red (Parentage: Lady Williams x Golden Delicious) • Red bi-colour apple with a creamy white-flesh • Balanced taste and crisp texture • Grower friendly with minimal bruising • Fruit that meets the quality specification to be contractually marketed as JOYA®





RDS and Cripps Red harvested week 19 in South Australia.

- TP15-41 / Eden™
- Inolov / Mandy®
- A424R03T003 / PremA003
- A268R20T093 / PremA093
- CIV323 / Isaaq™
- WA2 / Sunrise Magic®
- NY1/ SnapDragon®
- NY2/ RubyFrost®

Variety	Trademark	Colour	Harvest	Outstanding Characteristics
TP15-41	Eden™	Yellow when ripe, with a low percentage of fruit with light blush	Late January to late February	<ul style="list-style-type: none"> • An early season pear from the Ben Dor Programme, with extremely low chill requirement and superb eating quality • Several production friendly characteristics and excellent storage capabilities, with no storage disorders noted in trials. Scuffing and bruising does occur • Primarily it should be considered because of the excellent eating quality • Very sweet, low acid, crunchy and juicy. • A unique “exploding” crunchy texture that remains through all storage stages, including a retailer’s shelf • Tested by the independent evaluation company, Provar where it has achieved high scores in several criteria. • This variety is currently marketed under the brand EDEN™ with a licence required for export . No distinction is made between blushed and yellow fruit as the focus of the marketing effort is the flavour profile and eating quality. Market acceptance is high with demand for greater volumes. • Commercial agreement tbc



Disclaimer: This variety is not yet on the Variety List, and this is not an offer for sale



Disclaimer: This variety is not yet on the Variety List, and this is not an offer for sale



Disclaimer: This variety is not yet on the Variety List, and this is not an offer for sale



Disclaimer: This variety is not yet on the Variety List, and this is not an offer for sale

Variety	Trademark	Colour	Harvest	Outstanding Characteristics
Inoluv	Mandy®	Bi-coloured	Mid-season (with Fuji)	<ul style="list-style-type: none"> • Cross made by INRAE, France • Bi-coloured red, very attractive smooth apple with no to very little russet • Fruit is crisp, sweet, fine, and firm and very juicy and good taste • Fruit size: 75/80 • Resistant to the common strains of scab • Suitable for all production areas in France • Excellent shelf life after storage • CA storage potential under testing • Commercial agreement tbc



Disclaimer: This variety is not yet on the Variety List, and this is not an offer for sale

Variety	Trademark	Colour	Harvest	Outstanding Characteristics
A268R20T093 / PremA093	To be confirmed	Full block red colour with a light yellow background colour	Before Gala – possibly 10 to 14 days earlier.	<ul style="list-style-type: none"> • Cross made by Plant & Food Scifresh 'Jazz' x A080R12T094 • It is extremely grower friendly in tree architecture, precociousness and productivity. • Flowers well and fruit sets well • The fruit are extremely firm that stores well. The taste is a pleasing sweet one. • It is full coloured which is seen in even the poorer colour production areas. • Fruit size average of 200g, trees can be managed to achieve fruit size similar to Gala types in New Zealand • Estimated yield of 72 tons per ha • In summary the sweet taste, early timing of harvest, good colour, expected better storage than Gala plus early and high productivity make this an extremely interesting variety • Commercial agreement tbc



Variety	Trademark	Colour	Harvest	Outstanding Characteristics
A424R03T003 / PremA003	To be confirmed	Solid bright red apple	Fuji time End March	<ul style="list-style-type: none"> • Cross made by Plant & Food Honeycrisp X 'Sciros' Pacific Rose • Productive, fruit sets well • Tonnage per hectare is significant. • It's a grower friendly variety • Stunning solid bright red apple, continues to darken with maturity • Good colour in Koue Bokkeveld, Vyeboom and Grabouw. • Very large size fruit , 280g, with prominent white lenticels • A distinctly crisp bite with a sweet refreshing taste • Light and tender in texture • Commercial agreement tbc



Disclaimer: This variety is not yet on the Variety List, and this is not an offer for sale

Variety	Trademark	Colour	Harvest	Outstanding Characteristics
CIV323	Isaaq™	Solid dark red	7 – 10 days before Golden Delicious	<ul style="list-style-type: none"> • A so-called “snack apple” due to small size • A scab resistant cross of Galaxy x selection A3-7 • Harvests straight after Gala • A bi-coloured apple with about 80% overcolour • A balanced taste with acidic note • A pleasant eating experience, many like the crunch • Storageability in CA is 9 months • It has a good shelf life, keeping well at room temperatures • Offers the opportunity to participate in the snack apple market with a branded product



Disclaimer: This variety is not yet on the Variety List, and this is not an offer for sale

Variety	Trademark	Colour	Harvest Window	Outstanding Characteristics
WA2	Sunrise Magic®	Bi-Colour	Fruit mature late in Red Delicious season (* 1 week later than WA38)	<ul style="list-style-type: none"> • Parentage: Splendour x Gala • It is attractive with an orange-red to pinkish-red blush (70-90% of the skin surface) over a yellow background • Large and conspicuous lenticels • Moderately susceptible to mildew and fire blight; not prone to sunburn or bitter pit • Fruit shape is round, and size is medium/large; it is usually larger than 'Gala', comparable to 'Braeburn' and smaller than 'Fuji' • Storage potential: 12 months in CA • Taste is balanced, sweet with moderate acidity and excellent texture, reaches optimum eating quality and color after 3 months of storage



Disclaimer: This variety is not yet on the Variety List, and this is not an offer for sale

Variety	Trademark	Colour	Harvest Window	Outstanding Characteristics
NY1	SnapDragon®	Bi-Colour	Mid Season with Golden Delicious.	<ul style="list-style-type: none"> • Fantastic Eating quality and good colour - very dense apple • Parentage: Honeycrisp x NY752 • Bright coloured, snappy texture and a sweet bursting flavour • Medium fruit size, strong red blush covering 80-90% of the fruit • Firm and crisp with good sugar levels and low to moderate acidity • Excellent eating characteristics. • Resistance to powdery mildew and fireblight • Crunch Time Apple Growers is managing the marketing and promotion in the US.



Disclaimer: This variety is not yet on the Variety List, and this is not an offer for sale

Variety	Trademark	Colour	Harvest Window	Outstanding Characteristics
NY2	RubyFrost®	Bi-Colour	Late season (approximately Braeburn)	<ul style="list-style-type: none"> • Grower friendly tree with good production • Parentage: Braeburn x Autumn Crisp • Large fruit size with block red colour • Well-balanced taste and refreshingly crisp juicy texture • Good sugar levels and moderate acid that provides a balance of sweet and tart • Crunch Time Apple Growers is managing the marketing and promotion in the US.




Disclaimer: This variety is not yet on the Variety List, and this is not an offer for sale



Commercial Rootstocks – Tilis Moggee

- Nic[®] 29
- BA29



TopFruit

topfruit.co.za

International Leaders in Cultivar Management

- Low chill apple rootstock
- Very size controlling with a tree size approximately 25 – 40% compared to a seedling rootstock
- Compared to other M9's it appears better adapted to harsh drier conditions
- Mulching is extremely important to avoid excess heat in the shallow roots
- Like all M9's it needs a support structure
- The anchoring roots are poor, but the feeder roots are very good
- Trees come into bearing sooner (precocious)
- Yield efficiency is high and with appropriate planting distance gives high production (productive)
- The size of the fruit is typically bigger than the more vigorous rootstocks as well as a smaller spread of fruit sizes
- Colour is typically improved on the Nic® 29 rootstock
- There is less excess shoot growth

- Quince Rootstock
- More vigorous than other quinces giving better survival rates
- Medium to low chill requirement
- Size controlling – around 50% to 60% of the size of a Bon Chretien seedling rootstock
- Suited to heavier soils and not well suited for sandy soils found in the Western Cape. With good management and fertigation BA29 can be successfully grown on soils with a high sand fraction
- Only use BA29 for Packham's Triumph (russet and incompatibility), Flamingo, Rosemarie (incompatibility) with an interstem
- The dwarfing results in trees which are quicker into production (precocious), give higher yields (productive), better fruit colour and size.
- The trees require significantly less labour to establish and maintain



Corné Grundlingh

Pome & Stone Fruit Operations Manager

corneg@topfruit.co.za
+27 83 652 6337



Peter Alderman

Pome Fruit Manager

petera@topfruit.co.za
+27 83 258 3275



Tilis Moggie

Pome & Stone Fruit Technical Manager

tilism@topfruit.co.za
+27 83 417 9295





TopFruit Stone Fruit

International Leaders in Cultivar Management

White flesh

- Extreme 845
- Pearlicious VI
- Majestic Pearl
- Giant Pearl

Yellow Flesh

- Dorabelle



Plums

- Blackred I
- Blackred IV
- Red Phoenix



TopFruit

topfruit.co.za

International Leaders in Cultivar Management

- BQ Genetics - USA
- Provedo - Spain
- Star Fruits - France

Extreme 845



Breeder:	Provedo (Spain)
Week:	46
Size:	64mm – Count 23
Brix:	16%
Chilling:	Low

This white flesh nectarine is suitable for planting in areas that accumulate 300 hours of chilling during winter. Harvesting period is from week 46, in Worcester. The storage of this variety is at least 28 days at 0,5°C and suitable for sea freight. It is highly recommended for commercial plantings.

Pearlicious VI



Breeder:	Bradford (California)
Week:	01
Size:	72mm – Count 18
Brix:	17%
Chilling:	Low/Medium

This white flesh nectarine is suitable for planting in areas that accumulate 600 hours of chilling during winter. Harvesting period is from week 01, in Ceres.

The storage of this variety is at least 28 days at 0,5°C and suitable for sea freight. It is highly recommended for commercial plantings.

Majestic Pearl



Breeder:	Bradford (California)
Week:	03
Size:	73mm – Count 18
Brix:	20%
Chilling:	Medium/High

This white flesh nectarine is suitable for planting in areas that accumulate 600 hours of chilling during winter. Harvesting period is from week 03, in Ceres.

The storage of this variety is at least 28 days at 0,5°C and suitable for sea freight. It is highly recommended for commercial plantings.

Giant Pearl



Breeder:	Bradford (California)
Week:	06
Size:	70mm – Count 18
Brix:	18%
Chilling:	Medium

This white flesh nectarine is suitable for planting in areas that accumulate 600 hours of chilling during winter. Harvesting period is from week 06, in Ceres.

The storage of this variety is at least 28 days at 0,5°C and suitable for sea freight. It is highly recommended for commercial plantings.

Dorabelle



Breeder:	Star Fruits (France)
Week:	03
Size:	74mm – Count 18
Brix:	13%
Chilling:	Medium/High

This yellow flesh nectarine is suitable for planting in areas that accumulate 600 hours of chilling during winter. Harvesting period is from week 03, in Ceres.

The storage of this variety is at least 28 days at 0,5°C and suitable for sea freight. It is highly recommended for commercial plantings.

Summer Bright replacement

Blackred I



Breeder	Bradford (California)
Week	47
Size	63mm
Brix	14%
Chilling	Low/Medium

This red flesh plum is suitable for planting in areas that accumulate 400 hours of chilling during winter. Harvesting period is from week 47, in Robertson.

The storage of this variety is at least 28 days at 0,5°C and suitable for sea freight. It is highly recommended for commercial plantings.

View Blackred I video [here](#)

Blackred IV



Breeder:	Bradford (California)
Week:	50
Size:	58mm
Brix:	15%
Chilling:	Low/Medium

This red flesh plum is suitable for planting in areas that accumulate 400 hours of chilling during winter. Harvesting period is from week 50, in Robertson.

The storage of this variety is at least 28 days at 0,5°C and suitable for sea freight. It is highly recommended for commercial plantings.

Red Phoenix



Breeder	Bradford (California)
Week	3-5
Size	57mm
Brix	18%
Chilling	Low/Medium

This red flesh plum is suitable for planting in areas that accumulate 400 hours of chilling during winter. Harvesting period is from week 3-5, in Robertson.

The storage of this variety is at least 35 days at 0,5°C and suitable for sea freight. It is highly recommended for commercial plantings.

View Red Phoenix video [here](#)

- Sequoia – Medium chill (Commercial)
- Sir Tom – Medium chill (Not commercial)

Exciting new varieties

- Early Glen
- Arvin Glen
- Glen Heart

Nuts

Adex – Pistachio rootstock

Almonds

- Lauranne
- Mandaline

Golden May





Tilib Moggee

Pome & Stone Fruit Technical Manager

tilism@topfruit.co.za
+27 83 417 9295



Corné Grundlingh

Pome & Stone Fruit Operations Manager

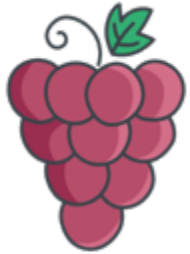
corneg@topfruit.co.za
+27 83 652 6337





TopFruit

topfruit.co.za



TopFruit
GRAPES

TopFruit Table Grapes

International Leaders in Cultivar Management

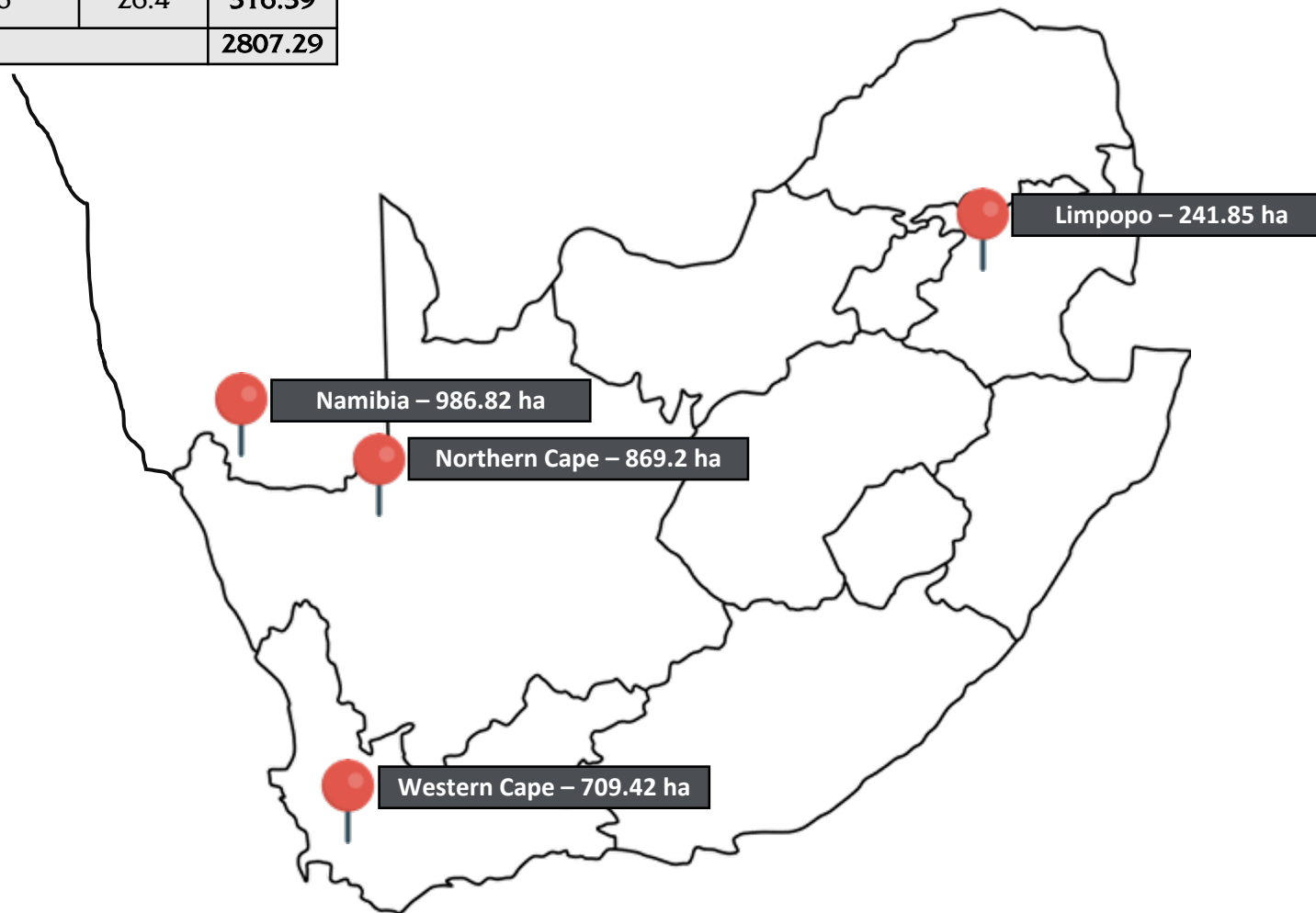
Varieties managed by TopFruit

- ARRA™ Varieties
- Early Sweet™
- Ralli Seedless
- LUCA



Varieties managed by TopFruit

	Limpopo	Northern Cape	Western Cape	Namibia	Total
ARRA	47.85	242.47	580.37	635.42	1506.11
Early Sweet	194	431	34.79	325	984.79
Ralli Seedless	-	195.73	94.26	26.4	316.39
Total					2807.29



Commercialised ARRA™ Varieties

- ARRA Passion Star™
- ARRA Mystic Bloom™
- ARRA Sweeties™
- ARRA Passion Fire™
- ARRA Sugar Drop™
- ARRA Honey Pop™
- ARRA Mystic Dream™
- ARRA THIRTYFOUR

- 79B-44+1
- 83B-21+2
- 93B- 35+7
- 88A- 8+2
- 94B- 35+7
- 28-84+2

ARRA Passion Fire™ (ARRA 29)

Characteristics:

Type:	Red seedless
Harvest time:	Early
Taste:	Natural sweet
Texture:	Firm
Size:	20-22 mm
Optimal Brix:	17



Planting Statistics:

Planted (RSA and Namib)	398.26 ha
2021 plantations	64 ha
2022 orders	95 ha



ARRA Sugar Drop™ (ARRA 30)

Characteristics:

Type:	White seedless
Harvest time:	Early
Taste:	Natural sweet, neutral
Texture:	Firm
Size:	18-20 mm
Optimal Brix:	17

Very low labour variety



Planting Statistics:

Planted (RSA and Namib)	93.05 ha
2021 plantations	2.6 ha

View ARRA Sugar Drop™ video [here](#)



ARRA Honey Pop™ (ARRA 33)

Characteristics:

Type:	White seedless
Harvest time:	Very early
Taste:	Light muscat
Texture:	Firm
Size:	20-22 mm
Optimal Brix:	17

Very low labour variety

No presence of shotberries



Planting Statistics:

Planted (RSA and Namib)	9.7 ha
2021 plantations	16.93 ha
2022 orders	110 ha



Characteristics:

Type:	Red seedless
Harvest time:	Early – Mid-season
Taste:	Natural sweet
Texture:	Crunchy
Size:	22 mm
Fertility:	High
Optimal Brix:	18



Variety	Payment Structure
ARRA™	<p>Invoiced in USD\$.</p> <p>Export and Local volumes @ USD\$0.30 per 4.5kg carton. Varieties from ARRA33 and upwards planted in 2022 and after, will be invoiced at a variable royalty rate to be agreed on in due course.</p>
Early Sweet™	<p>Invoiced in USD\$.</p> <p>Export volumes @ USD\$0.30 per 4.5kg carton.</p>
Ralli Seedless*	<p>Invoiced in ZAR.</p> <p>Export volumes @ 5% of the ex-farmgate price per actual carton. Local volumes @ R1.50 per 4.5kg carton.</p> <p>Ralli Seedless* also has additional fees for volumes to the Far East, invoiced in USD\$:</p> <ul style="list-style-type: none"> • Up to and Including week 52 (up until 2 January 2022) date of departure @ USD\$0.30 • Week 1 (3 January 2022) and later date of departure @ USD\$0.60 <p>Written request and approval of dispensation is required before shipping of volumes from week 2 (10 January 2022) and later departure – An additional penalty of USD\$3.00 will be incurred if no dispensation is in place.</p> <p>Promotional Fee - Each carton will additionally incur a promotional fee @ USD\$0.10.</p> <p>Shipments to:</p> <ul style="list-style-type: none"> • China and Vietnam are open with a maximum of three (3) containers per exporter per destination per week – to avoid peaks of oversupply. • Thailand, Malaysia, Hong Kong, and Singapore are only permitted one (1) container per exporter per destination per week, after week 1.



AJ Jansen van Vuuren

Table Grape Manager

aj@topfruit.co.za
+27 84 408 1417



Arnold Viljoen

Specialist Viticulturist

arnoldv@topfruit.co.za
+27 83 377 1181





TopFruit Berries

International Leaders in Cultivar Management

TopFruit Berry Unit was formed in 2018 with our first plantings in 2019.

The objectives of the Berry Unit are:

- to supply berry genetics to all growers without any restrictions
- to charge favourable royalty rates on licenced genetics
- to allow growers to plant hectares without limits
- allow growers a choice of marketers to market fruit locally and for export
- to supply superior genetics and a variety of breeding programs & cultivars for different climate zones
- to assist growers with technical support in establishment and production techniques

View Blueberry Terms & Conditions for planting video [here](#)

Typical planting of TopFruit Berries: East London

18 Month old plants in pots



Typical planting of TopFruit Berries: Limpopo

18 Month old plants in pots



Blueberries:

University of Georgia (USA) Commercially available - 130ha planted to date (low chill)

New Zealand Plant & Food Research Institute (NZ) 10ha planted to date (mid-high chill)

Planasa (Spain) Trial Agreement with option to commercialize- very low chill to mid-chill (plant at 14 sites in Sept)

IQ Berries (Australia) Commercial Agreement – expect first material by 2022. Very low chill to evergreen. Trials in Namibia/Zimbabwe

Oregon Blueberries (USA) Trial Agreement on Titanium & Megasblue



Other Berries:

Raspberries:

James Hutton Institute (Scotland): Seven Primocane & Floricane varieties commercially available

Aurora Fruits (Italy) Primocane raspberry variety – to be imported

Blackberries:

Oregon University (USA): Columbia Star

North Carolina University (USA): Von

Red Currents:

Artevos (Germany) Two Red Current varieties to plant commercially





TopFruit Blueberry varieties: U. of Georgia (USA)

View University of Georgia USA Breeding Program video [here](#)



TopFruit

topfruit.co.za



TopFruit Blueberry varieties: Plant & Food (NZ)

View New Zealand Plant & Food Breeding Program video [here](#)



TopFruit

topfruit.co.za

International Leaders in Cultivar Management



Chilling required: Very low chill (-50h < 7.2C) Can evergreen in tropical regions

Flowering: Flower/budbreak May/June. PDF = 80 Days.

Harvest: Very early to mid-season production: Ripens from July to September in Limpopo and from August to October in the Cape and KZN.

Berry size: Medium to large size fruit (1.8 – 2.5 g/berry), from 14-20mm

Flavour: Crisp & sweet with good brix (13-14^o), average acidity



Chilling required: Low chill (-250h < 7.2C)

Flowering: Flower/budbreak May/June. PDF = 90 Days.

Harvest: Early to mid-season production: Ripens from August to October in Limpopo and from September to November in the Cape and KZN.

Berry size: Large size fruit (1.8 – 3g/berry), from 14-24mm

Flavour: Crisp & sweet with good brix (13-15^o), average acidity

University of Georgia Varieties: Early Duchess



Chilling required: Low chill (-50h < 7.2C) Evergreen type suitable for warm climates

Flowering: Flower/budbreak May/June. PDF = 80 Days. (flower without chilling)

Harvest: Very early season production: Ripens from July to October in Limpopo and from August to October in the Cape and KZN. High production.

Berry size: Large size fruit (1.8 – 3g/berry), from 14-24mm

Flavour: Crisp & sweet with good brix (13-15^o), average acidity



Chilling required: Very low chill ($-50\text{h} < 7.2\text{C}$) Evergreen type

Flowering: Flower bud break May/June PDF = 80 Days

Harvest: Very early season production: Ripens July to October in Limpopo and August to October in cooler areas like Cape and KZN

Berry size: Large size fruit (1.7–2.8g/berry), between 14-22mm

Fruit Quality: Firm & crisp, sweet with good brix (12-15^o), average acidity, very good eating with outstanding flavour



Chilling required: Mid chill (350-400h < 7.2C)

Flowering: Flower bud break June/July PDF = 90 Days

Harvest: Mid season production: Ripens August to November in Limpopo and September to December in cooler areas like Cape and KZN

Berry size: Large size fruit (1.8–3g/berry), between 14-22mm

Fruit Quality: Firm & crisp, sweet with good brix (12-15^o), average acidity, very good eating with outstanding flavour. Resistant to cracking during rain.



Chilling required: Low- Mid chill (200-300h < 7.2C)

Flowering: Flower bud break June/July PDF = 90 Days

Harvest: Mid season production: Ripens August to November in Limpopo and September to December in cooler areas like Cape and KZN

Berry size: Large size fruit (1.8–2.5g/berry), between 14-20mm

Fruit Quality: Firm & crisp, sweet with good brix (11-13^o), average acidity, good eating and flavour. Very high production.



Chilling required: Mid chill (300-500h < 7.2C)

Flowering: Flower bud break September. PDF = 90 Days

Harvest: Late season production: Ripens Mid-December to January in cool regions

Berry size: Medium size fruit (1.5–2g/berry), between 12-18mm

Fruit Quality: Moderate firm, very sweet with good brix (12-14°), low acidity, good eating with sweet flavour. High production – 20tons/ha.



Chilling required: Mid to high chill (400-600h < 7.2C)

Flowering: Flower bud break Sept/Oct. PDF = 90-100 Days

Harvest: Very late season production: Ripens January to February in cool regions

Berry size: Medium to large size fruit (1.8–2.8g/berry), between 14-20mm

Fruit Quality: Firm, sweet with good brix (11-13°), low acidity, good eating with sweet flavour. Very high production – 30tons/ha.



Chilling required: Mid to high chill (400-600h < 7.2C)

Flowering: Flower bud break Sept/Oct. PDF = 100-120 Days

Harvest: Very late season production: Ripens February to March in cool regions

Berry size: Medium to large size fruit (1.5–2.5g/berry), between 12-18mm

Fruit Quality: Firm , sweet with good brix (11-13^o), low acidity, good eating with sweet flavour. Very high production – 30tons/ha.



Chilling required: Mid-chill (350-500h < 7.2C)

Flowering: Flower bud break July/Augustus. PDF = 90-100 Days

Harvest: Late season production: Ripens November to December in cool regions

Berry size: Large size fruit (1.8–3g/berry), between 14-22mm

Fruit Quality: Firm & Crunchy with good brix (11-13^o), low acidity, good eating with meaty texture. High production – 25tons/ha.

Blueberry Varieties for the Future: Planasa



Manila



Malibu



Marina



Maldiva

Blueberry Varieties for the Future: IQ Berries



MegaOne



MegaEarly



MegaCrisp



MegaGem



Blueberry Establishment Procedures

View Blueberry Establishment Procedures video [here](#)



Top Fruit

topfruit.co.za

International Leaders in Cultivar Management

Location: Farm proximity to the market is highly important.

Climate: Temperate summers, winters with adequate chilling units. Low humidity areas are challenging.

Crop cover: Tunnel production ideal, if possible, regardless of the climate. Alternatively construct a 20 – 30% shade net structure.

Soil Planting: Sandy, ridged soils with proper drainage.

Pot Planting: Coir substrate in small pot or bag (7-10L)

Trellising: Essential

Plant spacing:

- Primocane (Year 1)
 - If pot production, do high density
 - As high as 2,5m x 0,25m (16000 pots per ha)
 - If soil production, do florican density as below
- Floricane (Year 2)
 - 2,5m x 0,75m spacing
 - 5333 blackberry plants per ha
 - 10666 raspberry plants per ha



Available in spring 2023

Climate: Temperate summers, winters with high chilling units.

Crop cover: 20 – 30% shade net structure, close tight for birds.

Soil or Pots: Plant in sandy soils with proper drainage. Plants can tolerate clay percentage up to 20%. Pot production is not common.

Trellising: Essential

Planting density: 2,5 x 1m (4000 plants per ha). Plant 2-year-old nursery plants



Other Berry Varieties – Raspberries: Skye



Type: Mid to late Primocane bearer. Low chill requirement.

Plant Habit: Upright, vigorous and easy to manage.

Fruit Quality: Very firm, de-plugs easily for quick harvesting. Good sweet-acid balance with a fruity aroma.

Colour: mid- to light red.

Seasonality: Double cropping floricane and primocane bearer.

Yield: 15-25 tons depending on cropping style.

Post harvest shelf life: Very Good

Fruit Size: 5-6g/fruit

Other Berry Varieties – Raspberries: Glen Rocio



Type: Floricane bearer. Low chill requirement. Early season cropping.

Plant Habit: Spine free canes. Upright, vigorous and easy to manage.

Fruit Quality: Very firm, de plugs easily for quick harvesting. Good sweet-acid balance with typical raspberry aroma. Colour: glossy red.

Seasonality: Long cane double cropping possible.

Yield: 15-25 tons depending on cropping style.

Post harvest shelf life: Very Good

Fruit Size: 4-5g/fruit

Other Berry Varieties – Raspberries: Glen Dee



Type: Floricane bearer. High chill requirement. Late season cropping.

Plant Habit: Spinefree canes. Upright, vigorous and easy to manage.

Fruit Quality: Very firm, deplugs easily for quick harvesting. Sweet raspberry flavour with acid bite and creamy texture. Colour: glossy red.

Seasonality: Long cane double cropping possible.

Yield: 15-25 tons depending on cropping style. Fruit Size: 4-5g/fruit

Post harvest shelf life: Very Good

Disease Resistance: conferring resistance to most biotypes of the large raspberry aphid, *Amphorophora idaei*



Type: Floricane bearer. High chill requirement. Mid season cropping.

Plant Habit: Spine free canes. Upright, vigorous and easy to manage.

Fruit Quality: Very firm, de-plugs easily for quick harvesting. Sweet with a fruity flavour and elderflower tastes.

Colour: glossy red.

Seasonality: Long cane double cropping possible.

Yield: 15-25 tons depending on cropping style. Fruit Size: 5-6g/fruit

Post harvest shelf life: Very Good



Glen Mor: Floricane
(Phytophthora resistant)



Clen Carron: Mid Floricane



Lewis: Early Primocane

Other Berry Varieties – Blackberries: Von



Type: Floricane bearer. High chill requirement. Late season cropping.

Plant Habit: Spine free canes. Upright, vigorous and easy to manage.

Fruit Quality: Very firm, picks easily for quick harvesting. Sweet with low acids and a average brix of 9.4. Colour: glossy black.

Seasonality: Long cane double cropping possible.

Yield: 25 tons/ha depending on cropping style. Fruit Size: 6+g/fruit

Post harvest shelf life: Very Good

Other Berry Varieties – Blackberries: Columbia Star



Type: Floricane bearer. Med-High chill requirement. Mid season cropping.

Plant Habit: Spine free canes. Upright, semi-vigorous and easy to manage.

Fruit Quality: Very firm, de-plugs easily for quick harvesting. Sweet with low acids and a average brix of 9.5. Colour: glossy black.

Seasonality: Long cane double cropping possible.

Yield: 25 tons/ha depending on cropping style. Fruit Size: 5-8g/fruit

Post harvest shelf life: Very Good



Pieter Zietsman

Berry Manager

pieterz@topfruit.co.za
+27 82 341 4909



Altus Treurnicht

Berry Technical Manager

altust@topfruit.co.za
+27 79 683 3243





TopFruit Kinuifruit



Technical video

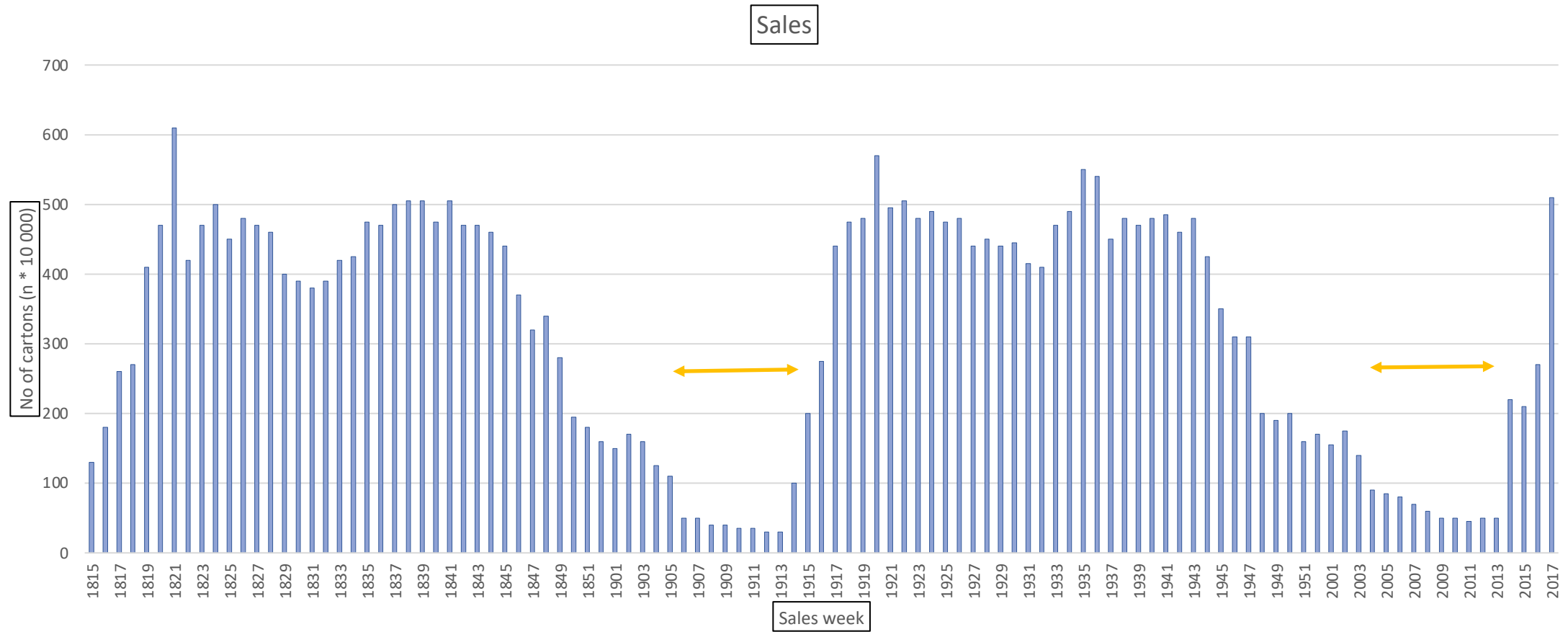
View TopFruit Kiwifruit: Dori™ and other new varieties video [here](#)



TopFruit

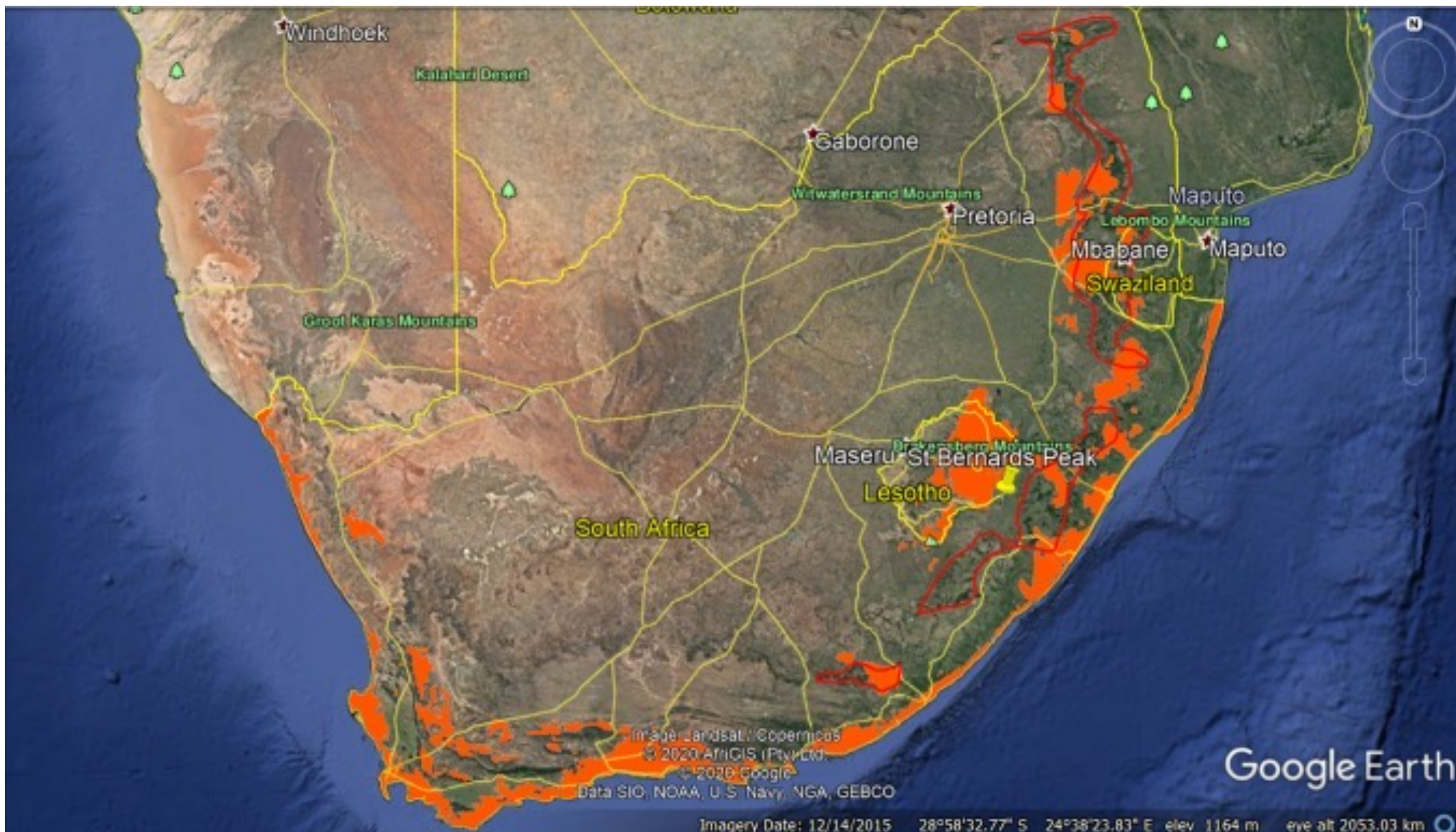
topfruit.co.za

International Leaders in Cultivar Management



Market opportunity translated

- March probably our window of opportunity - Very specific climates
- “Less optimal” areas – warmer climates – pushing window forward
- Red vs Gold varieties





Kiwifruit



TopFruit

topfruit.co.za



International Leaders in Cultural Management



Kiwifruit



TopFruit

topfruit.co.za



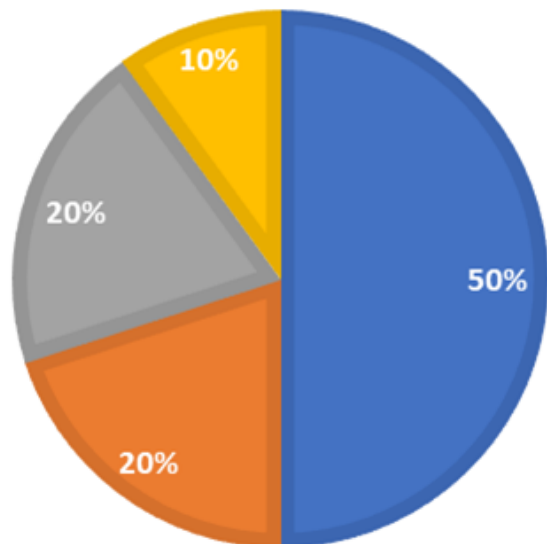
International Leaders in Cultural Management

Current situation in SA (1 of 2)

- Industry must be built around the high potential areas – Elgin/Grabouw, Waboomskraal, Langkloof (Hoeke), KZN Midlands & Magoebaskloof
- Other areas to be added later – has to be value add to main areas i.e. Rawsonville, Patensie, Tsitsikamma, etc
- Not for all.....

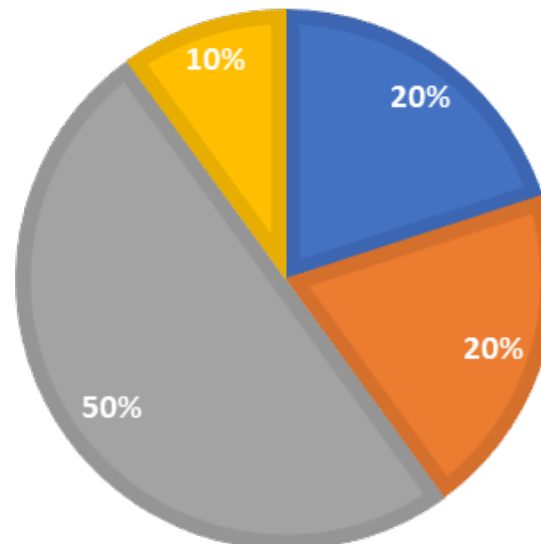
KIWI

■ Location ■ Management ■ Variety ■ Market



BLUEBERRIES

■ Location ■ Management ■ Variety ■ Market



Owner/Agent	Variety	Trademark	Description
Topfruit	Red Sun 1		Red
Summerfruit	Dori	Dori	Gold
Yanoon Biotech	ML585		Green
	CY38		Green
	FS94		Gold
	FS112		Gold
	FS133		Green/Gold
	FY45		Gold
	YNRT01		Rootstock
	FY28		Chinensis male
	CY41		Chinensis male
	FS77		Chinensis male
Russel Baker	Baker Male		Chinensis male
	E1		Gold
	F4		Kiwiberry
Tony Ponder	Yang Red 01		Red
	Yang Red 50		Red
Ross Stevenson	HW8		Green









Important technical aspects to consider

- Micro climate (Chilling, Summer Temps, RH, Frost, Hail)
- Soil
- Nematodes
- Water
- Well drained soils
- Don't plant too deep
- Organic material
- Timing of inputs critical
- Strong nursery plants



Contact



TopFruit

topfruit.co.za



Flippie Viljoen

Kiwifruit Manager

flippiev@kiwico.co.za

+27 82 804 2895



Roelof du Toit

Kiwifruit Technical

roelofdt@topfruit.co.za

+27 84 534 4126



International Leaders in Cultural Management

Thank you!

